

DESCRIPTION

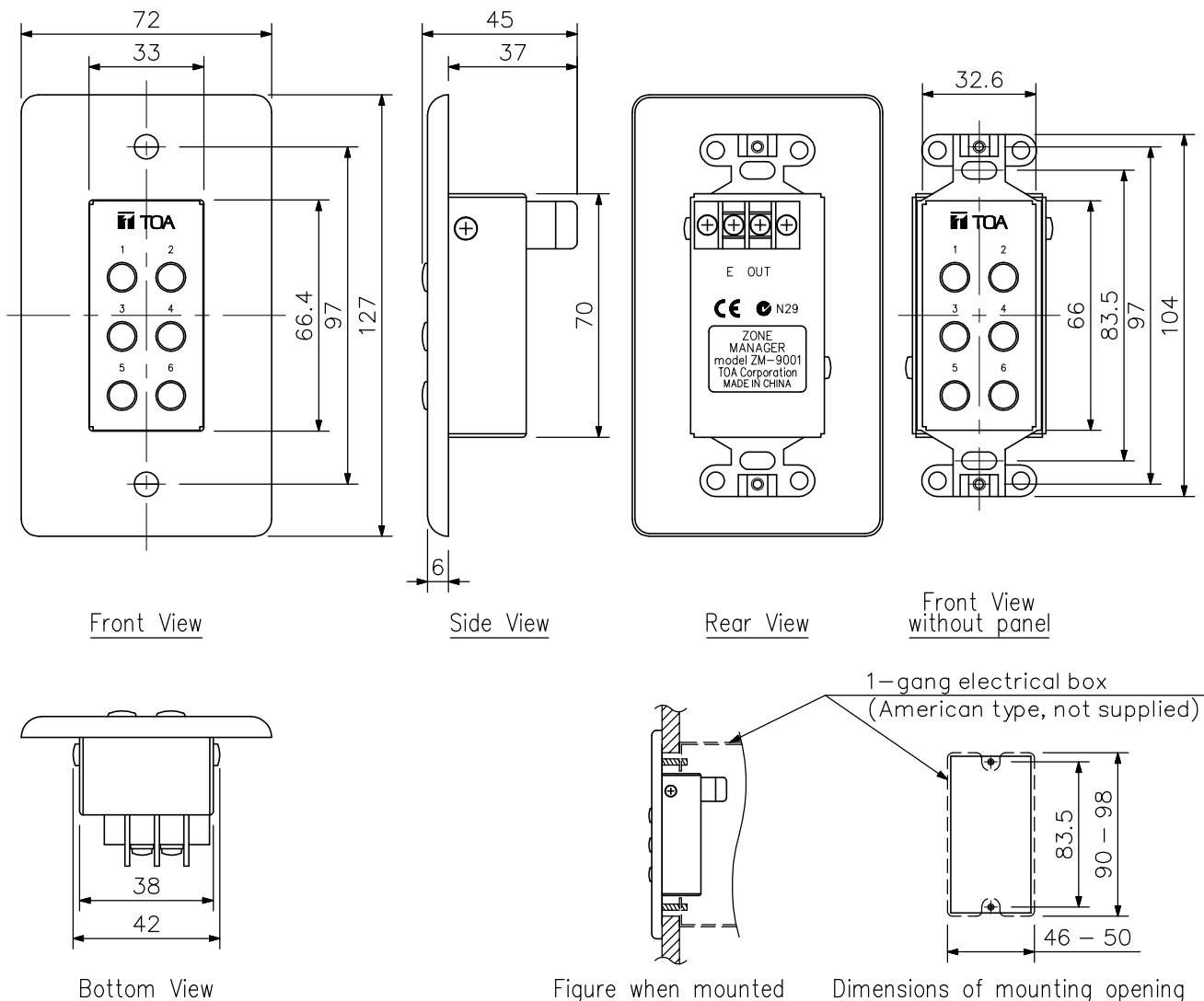
The ZM-9001 is a remote control switch panel used with the 9000 series amplifiers. It provides an additional 6 control inputs of amplifier expansion, and can be mounted in an American standard 1-gang electrical box in the wall.

SPECIFICATIONS

| | |
|-----------------------|--|
| Applicable Cable | Single conductor shielded cable |
| Line Resistance | 50 Ω or less (per line) |
| Terminal | M3 screw terminal, distance between barriers: 7.62 mm |
| Operating Temperature | -10°C to +40°C |
| Finish | Surface-treated steel plate, white, paint |
| Dimensions | 72 (W) × 127 (H) × 45 (D) mm |
| Weight | 170 g |
| Accessory | Box mounting screw (No.6-32UNC × 30) ×2, Box mounting screw (M4 × 30) ×2, Panel mounting screw ×2 |

Note: Since no electrical box is supplied with the unit, prepare it separately.

APPEARANCE



If the opening is too small or too large, the ZM-9001 cannot be mounted in the wall. Be sure to make an opening with dimensions given above when mounting.

UNIT:mm SCALE:1/2