

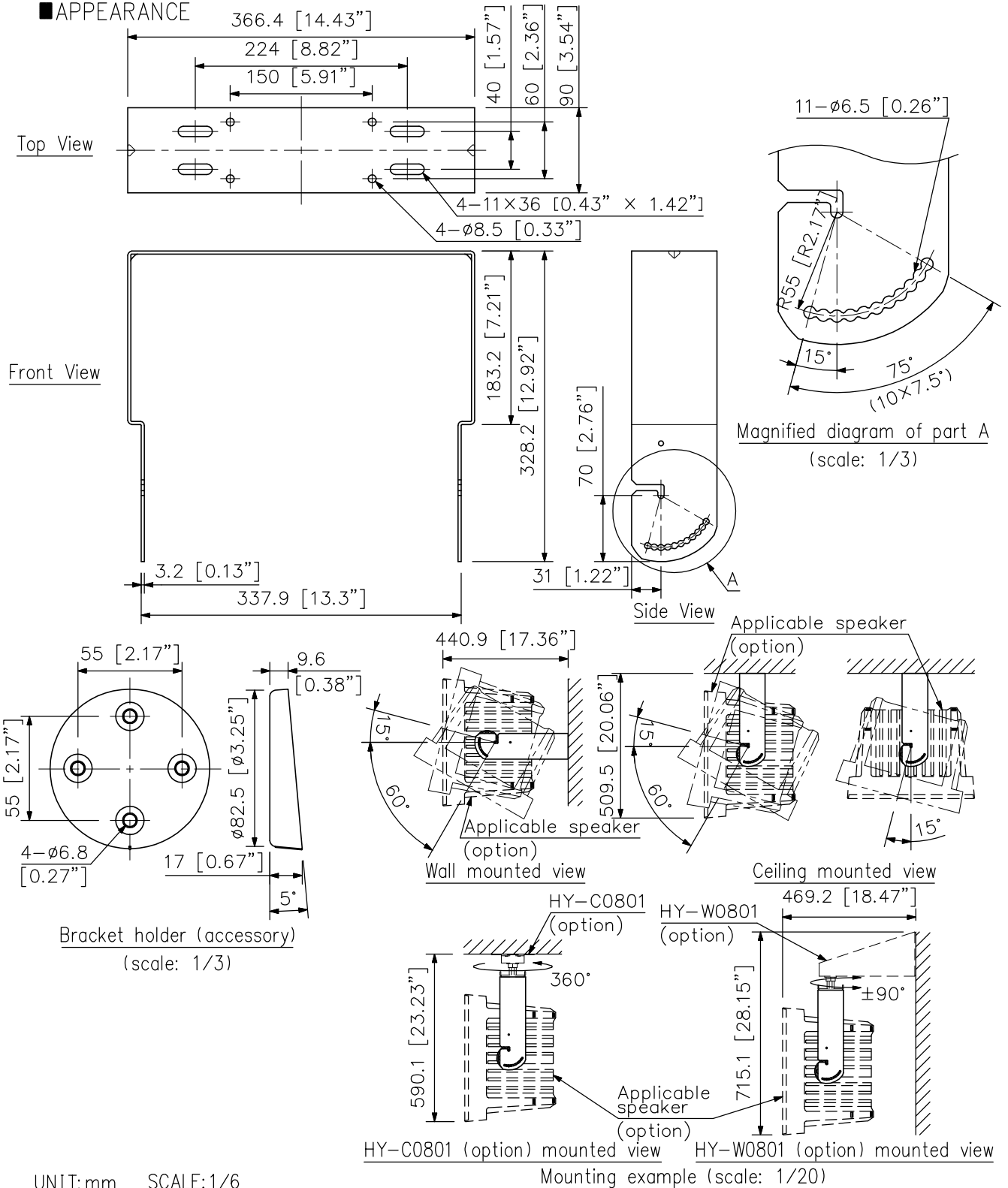
### DESCRIPTION

The HY-1200VB Mount Bracket is designed to mount speaker system to a wall or ceiling in a vertical configuration. It allows the speaker orientation angle to be adjusted from 15° upward to 60° downward when mounted on a wall, and from 15° upward to 90° downward when mounted to a ceiling.

### SPECIFICATIONS

Finish	Steel plate, black, paint
Dimensions	366.4 (W) × 328.2 (H) × 90 (D) mm (14.43" × 12.92" × 3.54")
Weight	2.2 kg (4.85 lb)
Accessory	Bracket holder ×2, Bracket holder mounting screw ×4, Speaker mounting screw ×4, Nut for the optional bracket ×4, Washer for the optional bracket ×4
Option	Ceiling mount bracket: HY-C0801, Wall mount bracket: HY-W0801
Applicable Speaker (option)	HS-120B, HS-1200BT

### APPEARANCE



UNIT:mm SCALE:1/6