

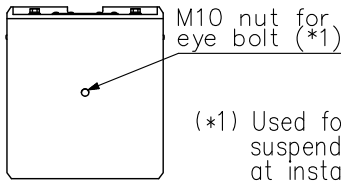
■DESCRIPTION

The SR-T5 is a 2-way Line Array speaker in which woofers and tweeters are arranged vertically in close proximity to each another. Its excellent speech clarity makes it ideal for installation in sports facilities with strong reverberation, such as gymnasiums. Sturdy impact-resistant construction allows the speaker to be used as a main speaker in small- or medium-scale indoor sports facilities.

■SPECIFICATIONS

Enclosure	Bass-reflex type
Power Handling Capacity	Continuous pink noise: 250 W Continuous program: 750 W
Rated Impedance	8 Ω
Sensitivity	96 dB (1 W, 1 m equivalent, measured at 4 m)
Frequency Response	70 Hz - 20 kHz
Crossover Frequency	3 kHz
Directivity Angle	Horizontal: 100° Vertical: 35°
Speaker Component	Low frequency: 13 cm (5.12") cone-type × 8 High frequency: Balanced dome-type × 24
Recommended Installation Height	4 - 5.5 m (13.12 - 18.04 ft) (Speaker top, when installed in sport facilities 30 m (98.43 ft) in length)
Adjustable Angle Range	Downward: 0°, 1°, 2°, 3° (when the supplied mounting bracket is used) Horizontal (left or right): 5°, 10° (when the optional SR-PB5 Wall Pan Bracket is used)
Input Terminal	M4 screw terminal, distance between barriers: 10 mm (0.39")
Finish	Enclosure: Plywood, black, urethane paint Baffle: Polypropylene, black Punched net: Steel plate, black, acrylic paint Mounting bracket: Steel plate, black, acrylic paint
Dimensions	310 (W) × 1239 (H) × 341 (D) mm (12.2" × 48.78" × 13.43")
Weight	29 kg (63.93 lb) (including accessories)
Accessory	Mounting bracket A ...1, Mounting bracket B ...1, Bracket mounting bolt ...6, Side cover ...5, Side cover mounting screw ...10, Eye bolt ...1, Safety wire ...1
Option	Wall pan bracket: SR-PB5 (to be used in conjunction with the supplied mounting bracket) Matching transformer: MT-S0601

■ APPEARANCE

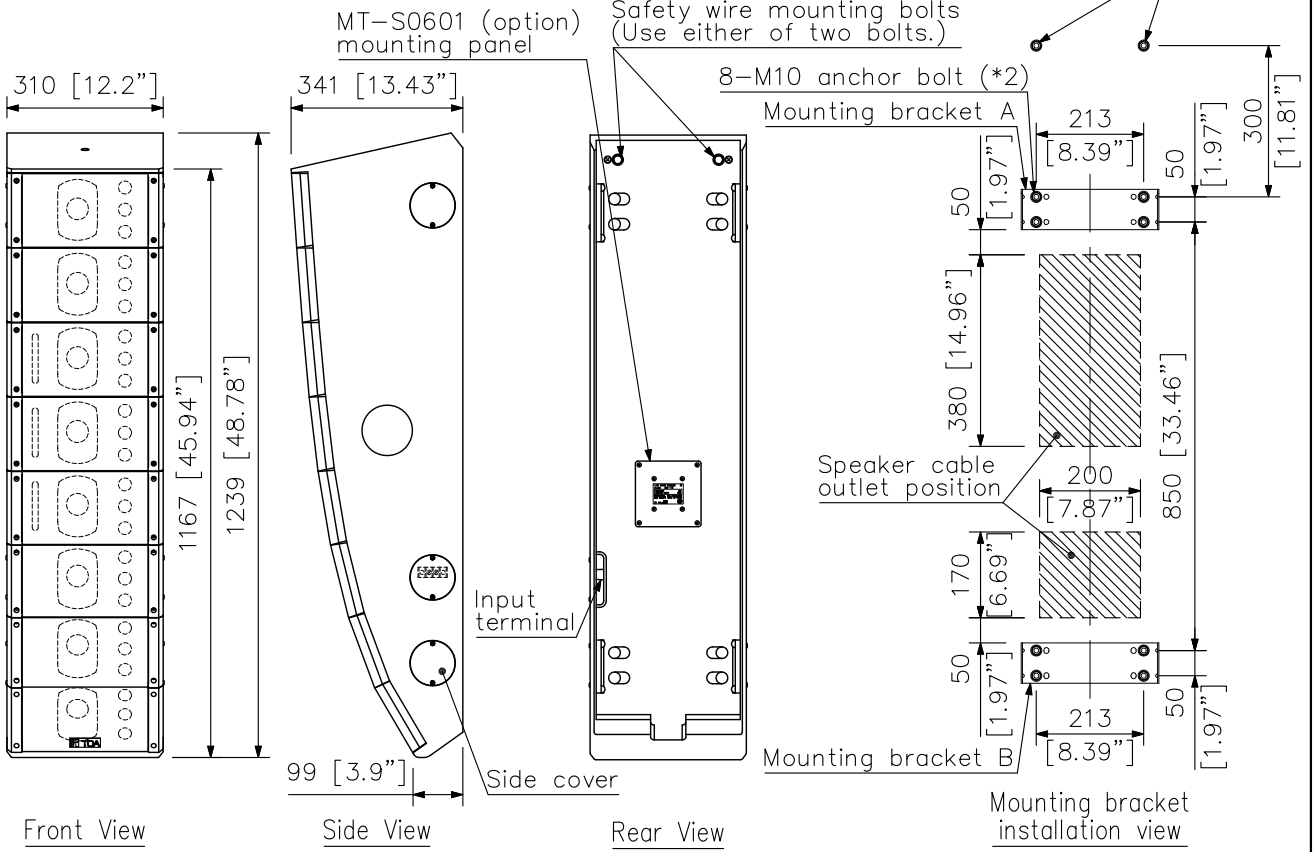


Top View

(\*1) Used for temporarily suspending the speaker at installation.

(\*2) M10 anchor bolts are not included.

M10 safety wire anchor bolt (Use either of two bolts.) (\*2)

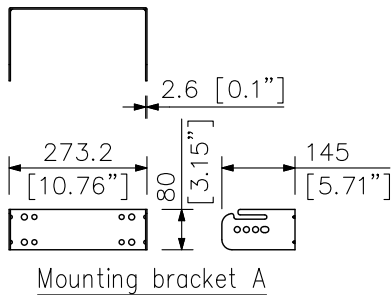


Front View

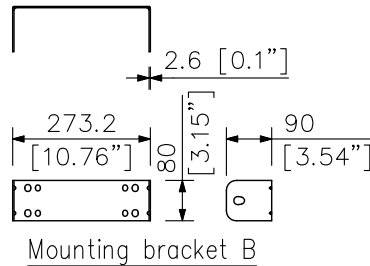
Side View

Rear View

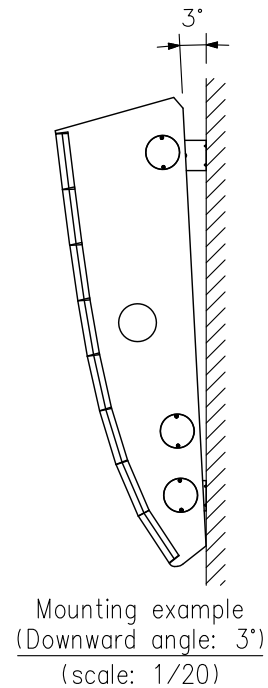
Mounting bracket installation view



Mounting bracket A



Mounting bracket B



Mounting example (Downward angle: 3°) (scale: 1/20)

UNIT: mm SCALE: 1/15