

DESCRIPTION

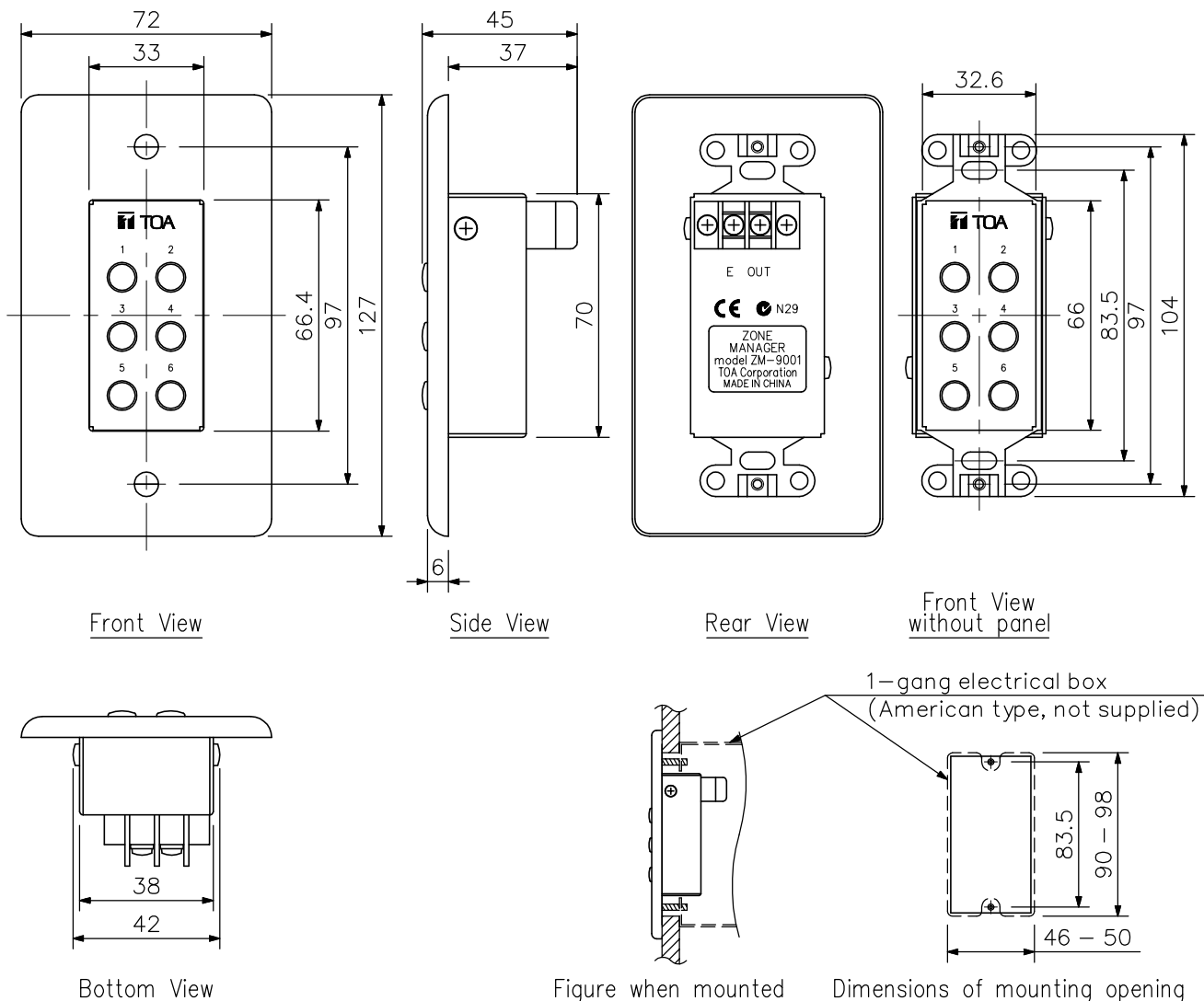
The ZM-9001 is a remote control switch panel used with the 9000 series amplifiers. It provides an additional 6 control inputs of amplifier expansion, and can be mounted in an American standard 1-gang electrical box in the wall.

SPECIFICATIONS

Applicable Cable	Single conductor shielded cable
Line Resistance	50 Ω or less (per line)
Terminal	M3 screw terminal, distance between barriers: 7.62 mm
Operating Temperature	-10°C to +40°C
Finish	Surface-treated steel plate, white, paint
Dimensions	72 (W) × 127 (H) × 45 (D) mm
Weight	170 g
Accessory	Box mounting screw (No.6-32UNC × 30) ×2, Box mounting screw (M4 × 30) ×2, Panel mounting screw ×2

Note: Since no electrical box is supplied with the unit, prepare it separately.

APPEARANCE



1-gang electrical box
(American type, not supplied)

Dimensions of mounting opening
If the opening is too small or too large, the ZM-9001 cannot be mounted in the wall. Be sure to make an opening with dimensions given above when mounting.

UNIT:mm SCALE:1/2